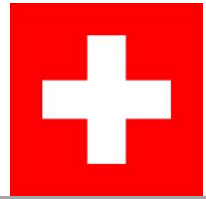




# The Spire

February 2012



Swiss United Church of Christ

PO Box 97

New Glarus, WI 53574

***“I have the audacity to believe that peoples everywhere can have three meals a day for their bodies, education and culture for their minds, and dignity, equality and freedom for their spirits.”***

I am writing on the day we celebrate the birthday of Rev. Dr. Martin Luther King Jr. The quote above is from Rev. King’s Nobel Peace Prize acceptance speech given on December 10, 1964. It is now etched in stone at the Martin Luther King memorial in Washington D.C.

It is a brilliant summation of what should be the basic essentials for all of God’s children. Great progress has been made since the expression of this vision by Rev. King in the 1960’s but it also perhaps more critical today than ever. The latest economic news gives us a pessimistic outlook; the gap between rich and poor is wider than ever and the middle class seems to be disappearing. Budget cuts are putting even greater pressure on schools’ abilities to provide education and cultural opportunities for our children. Equality and freedom is still a struggle for many persons in our world who are still marginalized and oppressed.

The prophet Micah also had a vision of how all of God’s children are called to serve. *“What does the Lord require of you but to do justice, and love kindness, and to walk humbly with your God.”* It is a calling for faithful disciples everywhere. That includes those at Swiss United Church of Christ. Already we support members who carry the visions of Rev. King and Micah in Chiapas, Mexico and El Salvador. Closer to home we have just served our first turn in the Family Promise ministry. In our own ways, we have given the families that stay with us a week’s worth of good meals and a comfortable place to stay, so that they might get a chance to get back on their feet, further their education, and gain a sense of dignity and pride, and encouragement for their spirits.

Now where do we go from here? Do we, as a faith community, have the audacity to believe in new ministries to serve our neighbors in new ways?

- Do we have the audacity to believe we could serve a meal on a regular basis to anyone who felt the need to come?
- Do we have the audacity to believe in supporting an after school mentoring program, or a youth mission that would extend young people’s minds and cultural experience?
- Do we have the audacity to believe we could work in social justice causes that would further equality and freedom for those who are oppressed?

Such audacity takes courage, generosity, and faith. Something I believe that is found in abundance at Swiss UCC.

Peace,

Pastor Todd

# Are You Going To Vote This Year?

## Treasurer's Report

No, I don't mean the presidential election; I'm talking about voting with your dollars as to how this year will change Swiss Church.

This year should be a very positive year for your Church, groups are leaving for Chiapas, El Salvador, Biloxi, Habitat is building a home in Blanchardville, Care and Share is being rejuvenated, Cemetery Committee is actively working to resolve many issues and Property Committee is working on new front doors and signage for inside the Church. A new mission is just starting, Family Promise, so you can see a lot is happening both locally and internationally.

However, these missions take the financial support of our members to maintain and operate. For the year ending December 31, 2011 total contributions were \$284,811.22 and expenses of \$302,124.62 leaving a loss of \$17,313.40.

We are starting the New Year with a negative cash balance of \$17,612.94. **If we, as a church, want to continue to grow and expand our ministries, more financial support is needed in 2012.**

Your Consistory is committed to keeping these missions and continuing to grow, however it's YOUR contributions that make it all possible.

This is why I'm asking if you will vote with your dollars this year. Without adequate funding these ministries will be cut and our Church will no longer be growing. It's our choice, do we want to continue to grow and expand our ministries or do we need to cut programs to meet our contribution level?

Respectfully Submitted,

Jon Ziltner

Consistory Treasurer



Biloxi, MS



El Salvador



Chiapas



Food Pantry

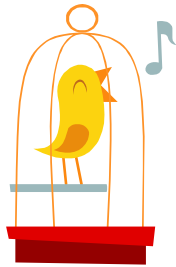


El Salvador

## Our Sincere Thanks

*We would like to thank everyone who visited, prayed for, helped move and supported Jim and Dell Burnard with their move to the New Glarus Nursing Home and Apartment. Your help was greatly appreciated as we could not have done it without you. It is comforting to know there are so many praying for and thinking of Jim and Dell at this time.*

*Peace and Blessings,  
Eric and Kay Quinney-Burnard*



***Oh come, let us sing to  
the Lord; let us make a  
joyful noise to the rock  
of our salvation!***

*Psalms 95:1*

'Make a joyful noise' with our church's choir. At least come to a few rehearsals.

Why not!? It's FREE, solos are not required, and you're guaranteed a stylish outfit that you can put on without too much thought on Sunday mornings (aka the choir robe)!

We meet in Fellowship Hall at 7pm on Wednesday nights to practice.

We look forward to singing with you!

## Happy New Year from the Care & Share Ministry of Swiss United Church of Christ!

This past year saw a great amount of activity as we refreshed a ministry so vital to so many in our faith family. In May, we celebrated both the volunteers of the past and welcomed several new volunteers at a special luncheon. We held two separate orientation sessions for new volunteers and now have over 20 folks participating in the Care & Share program in some way.

On 11/11/11, the Care & Share ministry dovetailed on the UCC's Mission 1 project and made 33 visits in one day. We were blessed to have Joy Hanson as our coordinator for the year, but unfortunately Joy has moved to Monroe and resigned her position. We are sad to see her go.

We are now in the process of searching for a new coordinator; someone who simply helps out encouraging volunteers, maintaining our list of members to visit, and helping organizing special events such as the luncheon. If you would be willing to take on this role, please see me to learn more about it.

And as always, if you are willing to be a volunteer to visit or any another capacity, also contact me to get started!

Peace,  
Pastor Todd  
608-514-2020

[todd.swisschurch@gmail.com](mailto:todd.swisschurch@gmail.com)



## Cemetery Flower Notice

Please remove any flowers that are **weathered, faded, or out of season** from the gravesites in the Swiss Church Cemetery no later than March 17, 2012.

Please call the church office with any questions. Thank you!

## Cookie Walk: Our Gratitude

Profits from the Annual December Cookie Walk came to approximately \$1,400.

This was the best variety of colorful, festive cookies ever. Thank you so much to all who contributed time, products and funding.

## The Year In Review

Because we voted to move the Annual Meeting to November, we felt that we would be missing something if we didn't hold some sort of a gathering in February.

With this in mind, we decided to hold a year in review presentation of 2011 following the 9:00 service in the Sanctuary on Sunday, February 19<sup>th</sup>.

There will still be 10:45 service at the New Glarus Home.



## Dessert and Devotions

Lent is just around the corner. Following that is Easter and spring. Spring brings the Annual Dessert and Devotions event for the ladies of Swiss Church.

Please consider hosting one of the 20 tables for the Sunday, May 6th date and let your commitment be known to Barb Anderson or Jane Martinson by **March 16th**.

For answers to questions or concerns contact:

Barb

Phone - 527-5146

E-mail - [grammybarb@tds.net](mailto:grammybarb@tds.net)

Jane

Phone - 527-2467

E-mail - [buddy2@tds.net](mailto:buddy2@tds.net)

## Go Green!

Why not sign up for e-mail delivery of our newsletter? It's FREE, and the money the church saves on postage can be used towards other projects!

You can always switch back to paper if you don't like it.

To sign up send an e-mail to:  
[swisschurch@gmail.com](mailto:swisschurch@gmail.com).



**Reminder:** Daylight Savings Time begins on Sunday, March 11th, so set your clocks ahead one hour before you go to sleep on the 10th.

## Ash Wednesday Services

The season of Lent begins with Ash Wednesday, February 22. Our church offers two worship experiences that day.

The first service is held at 10:30am at the New Glarus Home chapel. Coffee, juice and rolls will be available before worship (at 10am).

In the evening our annual Soup Supper will be served – volunteers are asked to bring soup, bread and a light dessert.

The Soup Supper will be held at 6:00pm in Fellowship Hall and the worship service begins at 7:00pm.

Communion will be served at both services.

## Green Cares Food Pantry needs the following:

Sugar  
Flour  
Peanut butter  
Jelly  
Cereal  
Juice  
Boxed Jell-O  
Pudding  
Rice  
Crackers  
Hamburger and Tuna Helper  
Noodles (*any type*)  
Fruit (*Canned or Fresh*)  
Vegetables (*Canned or Fresh*)  
Cake and Brownie mixes  
Boxed potatoes  
Macaroni and cheese  
Canned soups  
Tomato sauce  
Baby food  
Diapers  
Kleenex  
Bathroom tissues  
Toilet paper  
Laundry soap  
Dish soap  
Bath soap  
Household cleaning supplies

## **We want YOU!**

Special music is a wonderful addition to our worship services; please consider sharing your gift of music with our congregation.

Contact Louann Bodenmann, Barb Kummerfeldt, Shirley Lueschow, or Ruth Anderegg for more information.

## **A Slice of Swiss History for Just \$5.00!**

The Swiss United Church of Christ Sesquicentennial Cookbook makes a fantastic gift. For just \$5.00 per book, who could refuse?

This 170+ page treasure is filled with traditional recipes, historic pictures, informative anecdotes, and more!

Less than 50 copies remain.



We have **126** fans on Facebook!  
Are you one of them?

[www.facebook.com/SwissChurch](http://www.facebook.com/SwissChurch)

## **Winter Weather Cancellations**

Use your own discretion during the winter months as weather can sometimes be a problem, even for worship services.

A general rule of thumb for the members of Swiss Church is to use extreme caution when large amounts of snow/ice prohibit people from coming to church. Extreme lows in temperatures plus wind factor make for a dangerous situation to be out.

Services will most likely be cancelled if the weather officials are recommending travel only if absolutely necessary.

If you have a question about a worship service, Sunday school or meeting/event being cancelled, please refer to any of the following:

**Pastor Craig**  
608-354-9569

**Facebook:**  
[www.facebook.com/swisschurch](http://www.facebook.com/swisschurch)

**Our Website:**  
[www.swisschurch.org](http://www.swisschurch.org)

**Radio Stations:**  
WEKZ AM 1260 or FM 93.7

**Television Stations:**  
Channel 3 WISC  
Channel 15 WMTV  
Channel 27 WKOW



## Small Farmers. *Big Change.*

Did you know that the coffee you drink each Sunday during Coffee Hour is provided through Equal Exchange?

You can purchase your own Equal Exchange coffee, tea, chocolate and nuts on the **first** Sunday of each month during coffee hour.

What is Fair Trade? Fair Trade is a way of cutting out the middle-man so **you** receive a better value and *give* farmers more profit in return.

Proceeds obtained by Swiss Church from these sales will help support a scholarship fund to send a local teen on a future mission trip.

Support social justice; buy fair trade!

Find out more at:

<http://www.equalexchange.coop>

## North Stairway Closed for “Winter” Season

The outdoor steps leading up to the church from Village Park will be **CLOSED** from approximately through April 15 in an effort to protect our property from damage caused by salt, and to protect you from the snow and ice.

Members and visitors are encouraged to enter the south side door or the north lower level entrance (handicap accessible).

We realize that this winter has been very uncharacteristic with limited amounts of snowfall, but appreciate your cooperation.

## Church Attendance:

November 20 – January 15

<u>Date</u>	<u>Time</u>	<u>Attendance</u>
<b>11/20</b>	9:00a	142
	10:45a	61
<b>11/23</b>	6:30p	48
<b>11/27</b>	9:00a	134
	10:45a	52
<hr/>		
<b>12/4</b>	9:00a	149
	10:45a	40
<b>12/11</b>	9:00a	135
	10:45a	58
<b>12/18</b>	10:00a	126
<b>12/24</b>	3:30p	108
	9:00p	152
<b>12/25</b>	10:00a	38
<hr/>		
<b>1/1</b>	9:00a	48
	10:45a	24
<b>1/8</b>	9:00a	124
	10:45a	49
<b>1/15</b>	9:00a	
	10:45a	52

# Swiss Church Cemetery Bouquet Placement Program

Silk memorial flower bouquets purchased through Swiss Church will be placed at the New Glarus Cemeteries by the cemetery staff; year round placement is available and will begin with the nearest approaching season. [Order Early: We reserve the right to substitute.](#)

## Large Bouquet Options

**Cost:** \$70 for 4 season placement; \$20 each for single season placement

**a.** Winter

**b.** Spring

**c.** Summer

**d.** Fall

**e.** Veteran



## X- Large Bouquet Options

**Cost:** \$100 for 4 season placement; \$30 each for single season placement

**f.** Winter

**g.** Spring

**h.** Summer

**i.** Fall



[cut here](#)

**Return this portion, with payment, to:**

*Swiss United Church of Christ Cemetery, Po Box 97, New Glarus, WI 53574*

**Methods of Payment:** *Check, Money Order, Cash*

**Make checks payable to:** *Swiss UCC Cemetery*

Orderer's Name \_\_\_\_\_

Address \_\_\_\_\_

City \_\_\_\_\_

State \_\_\_\_\_

Zip \_\_\_\_\_

Phone \_\_\_\_\_

Email \_\_\_\_\_

\_\_\_\_\_  
Name of Loved One(s)

\_\_\_\_\_  
Bouquet choice(s)  
*please indicate number of seasons*

\_\_\_\_\_  
Name of Loved One(s)

\_\_\_\_\_  
Bouquet choice(s)  
*please indicate number of seasons*

**Total Number of Bouquets:** \_\_\_\_\_

**Total Monetary Amount Due:** \$ \_\_\_\_\_

With February comes Valentine's Day and many hopes and wishes to 'be mine.' Maybe it's more important than ever these days to have a holiday to celebrate love. I read this email recently and thought I would share it with you. A group of professional people posed this question to a group of 4 - 8 year olds, "What does love mean?" The answers they got were more than anyone would have imagined. Here are a few:

*"Love is when you go out to eat and give somebody most of your French fries without making them give you any of theirs."* Chrissy - age 8

*"Love is what makes you smile when you're tired."* Terri - age 4

*"Love is what's in the room with you at Christmas if you stop opening presents and listen."* Bobby - age 5

*"Love is when you tell a guy you like his shirt, and then he wears it every day."* Noelle - age 7

*"When my grandmother got arthritis, she couldn't bend over and paint her toenails anymore. So my grandfather does it for her all the time, even when his hands got arthritis too. That's love."* Rebecca - age 8

*"Love is when your puppy licks your face even after you left him alone all day."* Mary Ann - age 4

*"When you love somebody, your eyelashes go up and down and little stars come out of you."* Karen - age 7

*"Love is when your mommy gives daddy the best piece of chicken."* Elaine - age 5

*"If you want to learn to love better, you should start with a friend who you hate."* Nikka - age 6

*"I know my older sister loves me because she gives me all her old clothes and has to go out and buy new ones."* Lauren - age 4

*"There are two kinds of love. Our love. God's love. But God makes both kinds of them."* Jenny - age 4

Amen to Jenny—and all the rest. Love is such a precious gift; a gift that is only enjoyed as we share it with those around us.

*"Faith, hope and love abide, these three, and the greatest of these is love."* Paul—age ??

Peace and Love,

Pastor Todd



## Swiss United Church of Christ Direct Payment

We are pleased to offer you the Direct Payment Plan to make regular contributions to the church. With this plan, you can have your payment deducted automatically from your checking or savings account.

### Direct Payment:

- Saves time – fewer checks to write
- Helps meet your commitment in a convenient and timely manner – even if you're on vacation or out of town.
- Is easy to sign up for, and easy to change or cancel.
- Is dependable, flexible, convenient and easy

### Here's how Direct Payment works:

You authorize regularly scheduled payments to be made from your checking or savings account. Then just sit back and relax. Your payments will be made automatically on the date(s) specified, and proof of your payment will appear on your bank statement and quarterly church contribution statement.

### To take advantage of this service:

Complete this authorization form and return it to the church office.

Please attach a voided check for verification of all financial institution information. If you are unable to attach a voided check, please fill in your account number and routing number. **Note: be sure to sign and date the form.**

Please attach a voided check

## Authorization for Direct Payment

I, \_\_\_\_\_, authorize  
Swiss United Church of Christ to initiate electronic debit  
entries from my  checking **OR**  savings account

- Please take monthly  
deductions from my  
account on the (*check*  
*one*):
- 5th day of each  
month  
**or**  
 25th day of each  
month

- Please take  
bi-monthly deductions  
from my account on  
both the 5th and 25th  
day of each month.

I would like to contribute the amount(s) listed below to the  
following fund(s):

- General Fund     OCWM     Repairs & Improvements  
\$ \_\_\_\_\_    \$ \_\_\_\_\_    \$ \_\_\_\_\_

### Financial Institution Information (*please print*)

Name of Bank: \_\_\_\_\_

Account Number: \_\_\_\_\_

Routing/Transit Number: \_\_\_\_\_

City and State: \_\_\_\_\_

Signature: \_\_\_\_\_

Today's Date: \_\_\_\_\_

*This authority will remain in effect until I have cancelled it in writing.*

## 2011 Income & Expenses: December Financial Report

Month	2011 Actual Income	2010 Actual Income	2011 Income Budget	2011 Actual Expenses	2010 Actual Expenses	2011 Expense Budget	2011 Net Income	2011 Budgeted Net Income
January	\$27,277.40	\$21,903.95	\$26,028.37	\$25,254.20	\$22,397.50	\$26,687.52	\$2,023.20	(\$659.15)
February	\$18,337.71	\$22,335.17	\$19,028.33	\$25,763.07	\$28,171.39	\$26,234.46	(\$7,425.36)	(\$7,206.13)
March	\$23,285.37	\$21,393.54	\$26,528.33	\$32,652.29	\$25,978.42	\$26,033.70	(\$9,366.92)	\$494.63
April	\$27,462.54	\$26,875.30	\$26,028.33	\$26,130.29	\$23,458.40	\$26,956.18	\$1,332.25	(\$927.85)
May	\$21,672.02	\$28,208.05	\$22,278.33	\$26,338.14	\$24,170.78	\$25,209.46	(\$4,666.12)	(\$2,931.13)
June	\$19,209.21	\$17,509.01	\$17,508.33	\$26,887.00	\$20,986.02	\$25,443.70	(\$7,677.79)	(\$7,935.37)
July	\$20,088.00	\$18,144.95	\$20,458.33	\$23,277.94	\$25,725.24	\$25,281.18	(\$3,189.94)	(\$4,822.85)
August	\$18,581.00	\$20,475.55	\$18,458.33	\$15,561.96	\$24,148.73	\$25,504.46	\$3,019.04	(\$7,046.13)
September	\$19,416.10	\$18,619.28	\$20,533.33	\$25,437.17	\$21,907.89	\$25,703.70	(\$6,021.07)	(\$5,170.37)
October	\$29,448.99	\$35,290.18	\$22,033.33	\$23,307.45	\$24,875.30	\$25,861.17	\$6,141.54	(\$3,827.84)
November	\$22,789.60	\$19,827.40	\$44,033.33	\$25,580.13	\$22,278.72	\$25,654.46	(\$2,790.53)	\$18,378.87
December	\$37,243.28	\$43,494.50	\$37,783.33	\$25,934.98	\$26,356.03	\$26,528.71	\$11,308.30	\$11,254.62
<b>TOTAL</b>	\$284,811.22	\$294,076.88	\$300,700.00	\$302,124.62	\$290,454.42	\$311,098.70	(\$17,313.40)	(\$10,398.70)

### 2011 Benevolence Donations

Month	OCWM	Miscellaneous Donations
January	\$1,322.90	\$90.00
February	\$1,079.00	\$598.00
March	\$2,241.00	\$25.00
April	\$2,178.50	\$1,030.00
May	\$1,684.00	\$739.50
June	\$1,454.00	-
July	\$1,374.00	\$150.00
August	\$874.00	\$143.00
September	\$1,292.00	\$70.00
October	\$1,486.50	\$554.00
November	\$1,017.00	\$1,543.22
December	\$1,557.00	\$640.00
<b>Y-T-D</b>	\$17,559.90	\$5,582.72

**Annual OCWM Pledge:** \$16,000.00

**Ready Reserve Borrowing\* as of 12/31/11:** **\$20,611.97**

*Maximum borrowing allowed = \$35,000*

\*An interest rate of 18% is placed on this borrowing.

## February Church Worship Volunteers

If you are unable to fulfill your assignment(s), **please exchange with someone else**, and notify the church office.  
Thank you for your help!

9:00 svc.	Feb. 5	Feb. 12	Feb. 19	Feb. 26
<b>Lay Reader</b>	Dennis Streiff	Diana Dahlk	Diana Myers	John Colstad
<b>Greeters</b>	Guy & Sandy Nelson	Brenda Fisher	Pat Jeglum	Russ & Marie Reuter
<b>Ushers</b>	Laurie & Malcolm Austin, Rick & Diana Myers, Lori Arndt	Larry, Pam & Evan Hauge, David & Carol Hustad	Jake & Jodie Oelke, Rachel Fried, Kurt & Sara Hendrickson	Fran & Ken Zimmerman, Sr., Pat Jeglum, David & Susan Dumbleton
<b>Communion Servers</b>			Deb Kundert, Kevin Bright, Linda Smith, Tim & Mary Usher	
<b>Coffee Hour</b>	Rick & Diana Myers	Guy & Sandy Nelson	Heidi & Jeff Palmer	Dan & Shelly Truttman

10:45 svc.	Feb. 5	Feb. 12	Feb. 19	Feb. 26
<b>Greeters</b>	Tara Foster & Pam Venden	Barbara Hodgson	John & Sandy Colstad	Jim Kundert
<b>Ushers</b>	Tara Foster & Pam Venden	Dwight & Dianna Truttman	Brian & Sally Jeglum	Don & Jeanette Rupnow
<b>Communion Servers</b>			Don Rupnow, Katie Elmer	

### Ash Wednesday (Wednesday, February 22)

**10:30am** (New Glarus Home Chapel)

**Reader** Erwin Zweifel

**Greeters** Bob & Carol Holmes

**Ushers** Bob & Carol Holmes

**Communion Servers** Barb & Kent Anderson

**7:00pm** (Swiss Church Sanctuary)

**Reader** Fran Zimmerman

**Greeters** Dana Truttman

**Ushers** Pat Jeglum, Shelby Fritz, Kurt & Sara Hendrickson

**Communion Servers** Ron French, Shelly Johnson

## Sunday School Guest Parent Schedule

	February 5	February 12	February 19	February 26
<b>Preschool - K</b>	Glen Hubbard	Emma Mondloch	<b>Communion/Family Sunday*</b>	Maisin Onsager
<b>1<sup>st</sup> – 3<sup>rd</sup> grade</b>	Jenna Krantz	Nora Tarala		Avery Hauser
<b>4<sup>th</sup> – 5<sup>th</sup></b>	Tyler Lueschow	Karstyn Rossing		Grace Barnaby
<b>6<sup>th</sup> – 7<sup>th</sup></b>	Andrew Newberry	Kyle Fredrickson		Alex Betthauser

	March 4	March 11	March 18	March 25
<b>Preschool - K</b>	<b>Anna Boyle</b>	Reese Eichelkraut	<b>Communion/Family Sunday*</b>	Karson Benson
<b>1<sup>st</sup> – 3<sup>rd</sup> grade</b>	Stella Jacoby	Luke Brecklin		Shealyn Klosterman-Havens
<b>4<sup>th</sup> – 5<sup>th</sup></b>	Jeremy Kolasa	Amelia Newberry		Will Oelke
<b>6<sup>th</sup> – 7<sup>th</sup></b>	Karly Ready	Jonah Thompson		Alex Chiarello

*Parents/guardians are encouraged to attend Sunday school with their child/ren on the dates scheduled above.*

*\***All** Families are encouraged to attend church service together on these dates.*

# February 2012

Sun	Mon	Tue	Wed	Thu	Fri	Sat
			<b>1</b> 6p – Confirmation 7p – Choir Practice	2	3	4
<b>5</b> <b>Food Pantry Sunday</b> 9a – Worship 10a – Fellowship 10:45a – Worship 11:45a – Mission Committee Mtg.	<b>6</b> <b>Lenten Devotional Deadline</b>	7	<b>8</b> 6p – Executive Council Mtg. 7p – Choir Practice	9	10	11
<b>12</b> 9a – Worship 10a – Fellowship 10:45a – Worship	13	14	<b>15</b> <b>March Spire Deadline</b> 6p – Confirmation 7p – Choir Practice	16	17	18
<b>19</b> <b>Communion Sunday</b> 9a – Worship (no SS) 10a – Year in Review Presentation 10:45a – Worship	20	<b>21</b> <b>Fat Tuesday</b> 5:30-7:30p – Meal served by the Confirmands	<b>22</b> <b>Ash Wednesday</b> 10:30a – Service @ NGH 6p – Soup Supper 7p – Service at Swiss Church	23	<b>24</b> <div style="border: 2px solid blue; padding: 5px; text-align: center;">           Confirmation Urban Immersion Service Retreat         </div>	25
<b>26</b> 9a – Worship 10a – Fellowship 10:45a – Worship	27	28	<b>29</b> 8:30a – Spire Assembly 7p – Choir Practice			

## Contact our Pastors:



**Pastor Craig**  
Office: 608.527.2119  
Cell: 608.354.9569  
[craig.swisschurch@gmail.com](mailto:craig.swisschurch@gmail.com)



**Pastor Todd**  
Office: 608.527.2119  
Cell: 608.514.2020  
[todd.swisschurch@gmail.com](mailto:todd.swisschurch@gmail.com)

## Email Our Staff:

Swiss Church Office  
[swisschurch@gmail.com](mailto:swisschurch@gmail.com)

**Rev. Craig Jan-McMahon**  
*Senior Pastor*  
[craig.swisschurch@gmail.com](mailto:craig.swisschurch@gmail.com)

**Rev. Todd Hackman**  
*Interim Associate Pastor*  
[todd.swisschurch@gmail.com](mailto:todd.swisschurch@gmail.com)

**Kristina Schneider**  
*Property Manager*  
[kristina.swisschurch@gmail.com](mailto:kristina.swisschurch@gmail.com)

**Tracy Owen**  
*Administrative Assistant*  
[tracy.swisschurch@gmail.com](mailto:tracy.swisschurch@gmail.com)

**Rudi & Kay Feller**  
*Financial Secretaries*  
[rolonda@tds.net](mailto:rolonda@tds.net)  
or [fellerk@yahoo.com](mailto:fellerk@yahoo.com)

## Household Updates

*Please return this form to the church office with any requests.*

- My address is wrong on the label.
- I will be moving soon; below is my new information.
- I would like to receive *The Spire* via e-mail.
- I no longer wish to receive *The Spire*.
- Please contact me.
- Other: \_\_\_\_\_

Name: \_\_\_\_\_

Address: \_\_\_\_\_

\_\_\_\_\_

Phone: \_\_\_\_\_

Email: \_\_\_\_\_



**Swiss United Church of Christ**

18 5<sup>th</sup> Avenue, PO Box 97  
New Glarus, WI 53574

**Phone:** 608.527.2119

**Fax:** 608.527.6390

**E-mail:** [swisschurch@gmail.com](mailto:swisschurch@gmail.com)

**Website:** [www.swisschurch.org](http://www.swisschurch.org)

**Find us on Facebook!**

[www.facebook.com/swisschurch](http://www.facebook.com/swisschurch)

**Pastors:**

Rev. Craig Jan-McMahon

Rev. Todd Hackman (*Interim*)

**Worship Services:**

9:00am – Swiss Church Sanctuary

*Fellowship & refreshments follow this service*

10:45am – New Glarus Home Chapel

*Both services are handicapped accessible*



**Swiss United Church of Christ**  
18 5th Avenue, PO Box 97  
New Glarus, Wisconsin 53574

Non-Profit Org.  
U.S. Postage  
PAID  
New Glarus, WI.  
PERMIT No. 6

Change Service Requested



TO:

**February 2012**